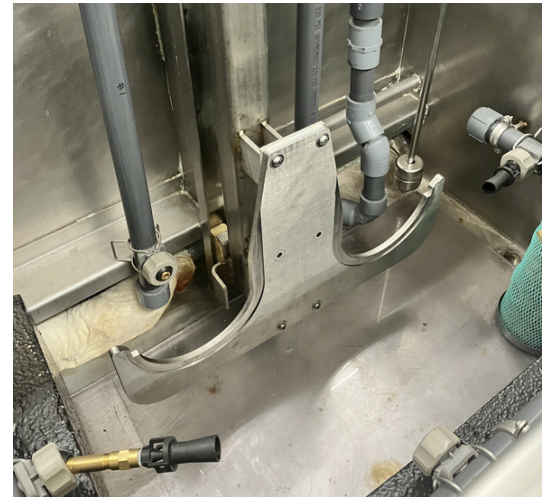
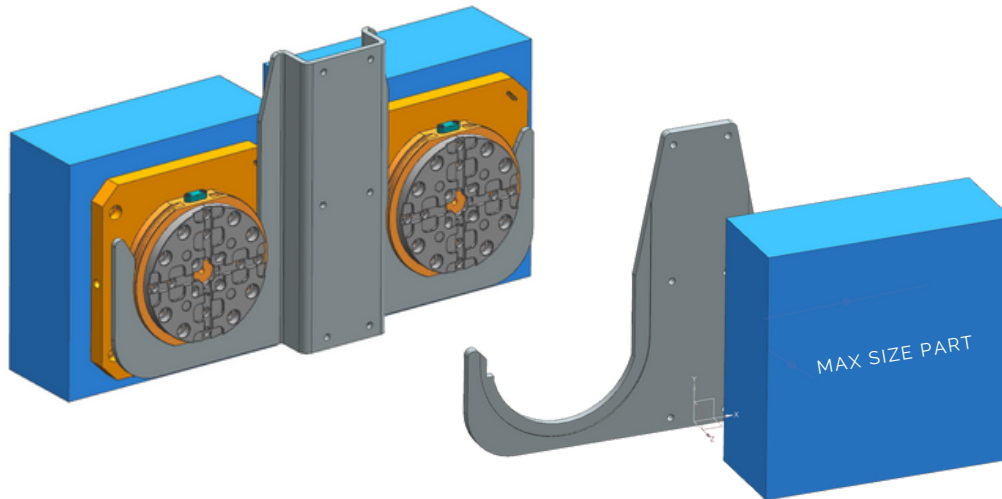


PARTS WASH ANCHOR - MEYER TOOL



What?

- Design a bracket to hold fixtures with parts for **washing**
- Robust and simple, production ready

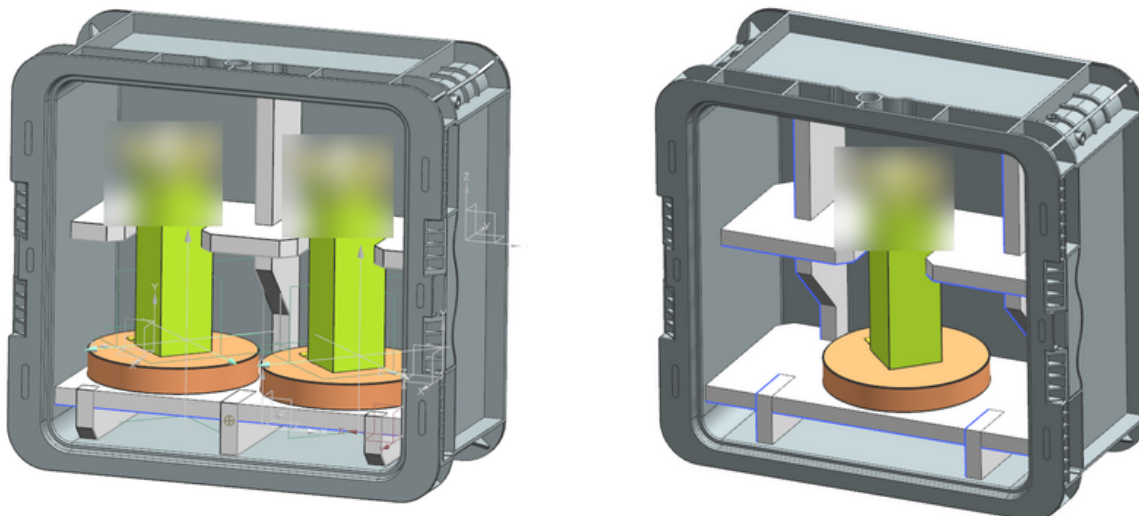
How?

- Used **Siemens NX** to iterate on and simplify designs
- Used onsite **milling machine** to cut features

Results

- Drastically **reducing time and manual labor** spent on part washing
- Laser cut stainless steel with milled features

CALIBRATION BLOCK BOX - MEYER TOOL



What?

- Box to **protect** sensitive inspection calibration block, while maintaining **ease of access**
- **Cheap** construction

How?

- Designed on **Siemens NX**
- Purchased box with easy to assemble cut sheet plastic

Results

- Hard Delrin stands up to wear of **repeated in and outs**
- Protects hardware from bumps and misalignments